



Bartlams

32 Woodland Avenue, TETTENHALL WOOD, WV6 8NE



£285,000

****EXTENDED FAMILY HOME LOCATED IN A SOUGHT-AFTER LOCATION**** Beautifully presented throughout to a high standard with a fantastic open-plan kitchen/living space this home is ideal for a family looking to be within walking distance of useful local amenities including primary and secondary schools. Considerably extended to the rear creating a large family area having multi-functional use, front sitting/dining room, Utility room with shower area and downstairs family bathroom. On the first floor are two double bedrooms and a further bedroom with fitted wardrobes. Driveway to the front and a south-facing rear garden with a patio area, brick-built BBQ area and a large rear outbuilding measuring 18ft x 15ft.

- EXTENDED FAMILY HOME.
 - THREE BEDROOMS.
- OPEN-PLAN KITCHEN/LIVING SPACE.
 - LIVING/DINING ROOM.
- DOUBLE GLAZING AND CENTRAL HEATING.
 - OFF ROAD PARKING.
- ENCLOSED SOUTH FACING REAR GARDEN.
 - POPULAR LOCATION.

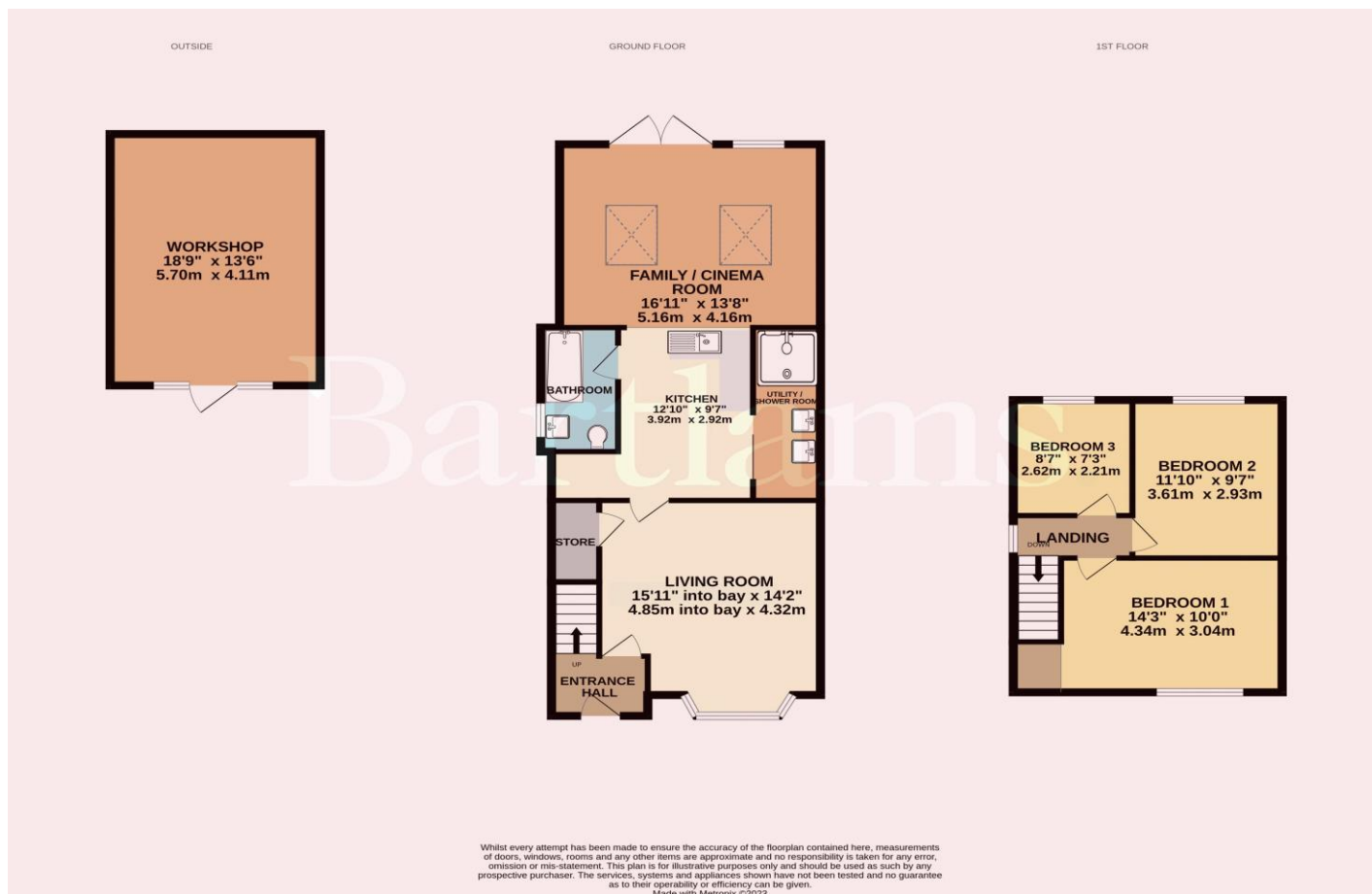


Freehold
COUNCIL TAX BAND - B
EPC RATING - C

NOTICE: These particulars, although believed to be correct, do not constitute any part of an offer or contract. All statements contained in these particulars as to this property are made without responsibility and are not to be relied upon as statements or representations of warranty whatsoever in relation to property. Any intending purchaser must satisfy themselves by inspection or otherwise as to the correctness each of the statements contained in these particulars. All measurements are approximate and for illustrative purposes only. Photographs are produced for general information and it must not be inferred that any item shown is included in the sale.

DISCLOSURE: As a professional Estate Agency our clients employ us to look after their best interests. This includes providing them with full details of offers made to purchase their property. To ensure our obligations to our clients are met we need to check the status of all potential purchasers. If you make an offer on this property we will ask a member of The Finance Family to contact you to verify your status. They are a leading firm of Independent Financial Advisers and Mortgage Brokers. Should they transact any business resulting from our introduction then we may receive a commission.

Bartlams



PLEASE SIGN BELOW TO AGREE THAT THE DETAILS ARE ACCURATE TO THE BEST OF YOUR KNOWLEDGE

SIGNED:

DATE:

24 High Street TETTENHALL Wolverhampton West Midlands WV6 8QT

01902 759888

tettenhallsales@bartlams.co.uk

www.bartlams.co.uk



